

Giraffe

GIRAFFE, / a **corruption** of *Zarāfah*, / the Arabic name for the tallest of all mammals, / and the typical **representative** / of the family Giraffidae.// In common with the okapi, / giraffes have skin-covered horns / on the head, / but in these animals, / which form the **genus** Giraffa, / these **appendages** are present / in both sexes; / and there is often an unpaired one / in advance of the pair on the forehead.// Characteristics are the great length of the neck and limbs, / the complete absence of **lateral** toes / and the long and tufted tail.// The tongue is remarkable for its great length, / measuring about 17 in.// It is covered with numerous large **papillae**, / and forms, / like the trunk of the elephant, / an admirable organ / for the examination and **prehension** of food.//

Giraffes are **inhabitants** of open country, / and owing to their length of neck and long flexible tongues / are enabled to **browse on** tall trees, / mimosas being favourites.// To drink or graze, / they are obliged to **straddle** the fore-legs apart; / but they seldom feed on grass / and are capable of going long / without water.// When standing among mimosas / they so harmonize with their surroundings / that they are difficult of detection.// Formerly giraffes were found / in large herds, / but **persecution** has reduced their number / and led to their **extermination** / from many districts.//

『キリン』とは / Zarāfah がなまって転じたもの / 哺乳類の中で最も背が高い動物のアラビア語名である / そして典型的な代表である / キリン科の// オカピと同様に / キリンも皮で覆われた角を持つ / 頭部に / しかし、これらの動物においては / キリン属を形成する / これらの突起物は存在する / 雌雄ともに / そしてしばしば対（つい）になっていないものがある / 頭の前にある対になっているものの前方に// 特徴的な点は、首と四肢が非常に長いこと / 側趾がまったくないこと、/ そして尾が長く房状であることだ// 舌の長さは非常に長く注目すべきである / 計測すると約 17 インチ（約 43 cm）ある// それ（舌）は多数の大きな乳頭で覆われており、/ さらに形成している / ゾウの鼻のような / 見事な器官を / 食べ物を調べ捕捉するための//

キリンは開けた場所に生息しており / その首の長さで長く柔軟な舌のおかげで / 背の高い木の葉を食べることができる / 特にミモザが好物である// 水を飲んだり草を食んだりするには、/ キリンたちは前脚を離して広げなければならない / しかし草を食べることはめったになく / 水なしで/長く過ごすことができる// ミモザの間に立っているときは / キリンたちは周囲と非常に調和しているため / 彼らを見つける事は難しい// 以前は、キリンは見られていた / 大きな群れで / しかし迫害によってその数が減り / そして絶滅にいたっている / 多くの地域から//

corruption	不正・腐敗 / 転訛*
representative	代表
genus	属（生物分類の1つ）
appendage	付属物、突起物
lateral	横向きの
papillae[複]	papilla 乳頭(=突起)

prehension	つかむこと / 把握
inhabitant	住民
straddle	またがる、大股で歩く
persecution	迫害
extermination	根絶、絶滅
browse on	～ [高い位置にある葉などを] 食べる

TIPS 生物の分類

生物の分類は、基本的な分類の階級で大きい枠組みから順に
超界 (domain) > 界 (kingdom) > 門 (phylum) > 綱 (class) > 目 (order)
> 科 (family) > 属 (genus) > 種 (species)

となっています。例えば人間は動物界/脊索動物門/哺乳綱/サル目/ヒト科/ヒト属/ヒト種になります。ヒト科の枠にはチンパンジー属、ゴリラ属もいます。属が違えば、かなり違う生物になりますね。分類法にもさまざまな考え方があり、日々議論がされています。今までとまったく異なる新しい分類が今後発見されることもありうるかもしれません。

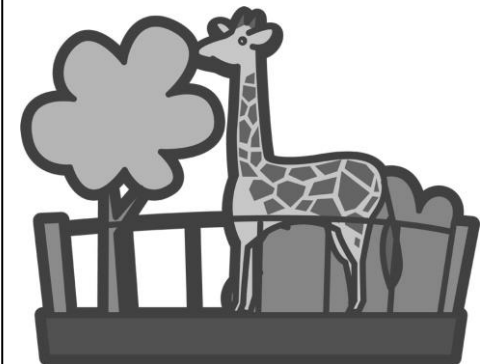
GIRAFFE, a _____ of Zarāfah, the _____ name for the tallest of all mammals, and the typical representative of the family Giraffidae. In common with the _____, giraffes have skin-covered horns on the head, but in these animals, which form the genus Giraffa, these _____ are present in both sexes; and there is often an unpaired one in advance of the pair on the forehead. Characteristic are the great _____ of the neck and limbs, the complete absence of lateral toes and the long and tufted tail. The tongue is remarkable for its great length, measuring about _____. It is covered with numerous large papillae, and forms, like the trunk of the elephant, an admirable _____ for the examination and prehension of food. Giraffes are inhabitants of open country, and _____ to their length of neck and long flexible tongues are enabled to browse on tall trees, _____ being favourites. To drink or graze they are _____ to straddle the fore-legs apart; but they seldom feed on grass and are capable of going long without water. When standing among mimosas they so _____ with their surroundings that they are difficult of detection. _____ giraffes were found in large herds, but persecution has reduced their number and led to their extermination from many _____.

Summarize (50 ~ 80 words) :

Question 1: Where do Giraffes live?

Question 2: What do Giraffes eat?

Question 3: How long is the Giraffe's tongue?



*** Background knowledge:**

none

*** Q&A Sample Answer**

Q1: Open country.

Q2: Mimosas.

Q3: 17 inches.

*** Summary Sample Answer**

(Very Short)

Giraffes have horns, long necks, and long tongues. They like Mimosas. They look like Mimosas.

(50 ~80 words)

Giraffes, derived from the Arabic name "Zarāfah," are the tallest mammals and representatives of the Giraffidae family. They possess skin-covered horns on their heads, characteristic long necks, limbs, and a unique tongue adapted for efficient food examination. Giraffes inhabit open areas, utilizing their extended necks and flexible tongues to browse on tall trees, especially mimosas. Formerly found in large herds, persecution has reduced their numbers and led to their extinction in many regions. Conservation efforts are crucial for their survival.