

## - 15-Minute City -

The idea of the "15-Minute City" / is becoming popular around the world.//  
It's about making cities / where **residents** can **access** everything / they need, / like  
shops, schools, parks, / and even **public transport**, / all within a 15-minute walk. //

In a 15-minute city, / everything is **conveniently** located **nearby**. // People  
can walk or bike/ to work, school, or the park / without **spending** a lot of time in  
**traffic**. / This makes the air cleaner / and the streets **safer**. // There are also more  
places / for people to play, shop, and meet their **neighbors**. // By **minimizing** car  
use, / the 15-minute city helps the **environment** / because it cuts down on  
**pollution**/ and helps fight **climate change**. // It also brings people together /  
because they are more likely to spend time in their **local community**. // Cities like  
Paris and Melbourne / are already working on / 15-minute city **principles**, / and  
many others are thinking about it too. // Experts suggest / this approach can  
significantly improve / **quality of life** for everyone. //

「15分都市」のアイデアは、/ 世界中で人気が高まっている// これは、都市  
をつくることに関するものである / 住民がすべてにアクセスできる / 彼らが必要とす  
る / 店舗、学校、公園のような / さらに公共交通機関 / すべて徒歩15分以内で//

15分都市では、/ すべての施設が便利に近くに配置されている// 人々は、歩  
いたり自転車で行ったりすることができる / 仕事や学校、公園に / 交通渋滞に多く  
の時間を費やすことなしに // これにより、空気がきれいになり / 街が安全になる//  
また、場所が増える / 人々が遊んだり、買い物をしたり、近所の人々と交流するため  
の// 車の使用を最小限に抑えることで、/ 15分都市は環境への助けになる / なぜな  
らば、汚染を減らし、/ 気候変動への対策にも役立つから// また、社会的なつながり  
も強化されます/ なぜならば、人々が地元のコミュニティで過ごす時間が増えるから//  
パリやメルボルンのような都市は / すでに取り組んでいる / 15分都市の原則に / 他  
の多くの都市もそれについて考えている// 専門家は、示唆している / このアプロ  
ーチが大いに向上させると / すべての人々の生活の質を //

### Vocabulary and Phrases

residents	住民
access	使えること
public transport	公共交通
conveniently	便利に
located	位置する
nearby	近くの
spending	費やす
traffic	交通
safer	より安全な
neighbors	隣人

minimizing	最小化
environment	環境
pollution	汚染
climate change	気候変動
local	地元の
community	地域社会
principles	原則
quality of life	生活の質

### Total Number of words used

: 162 words

### Time for 100 wpm

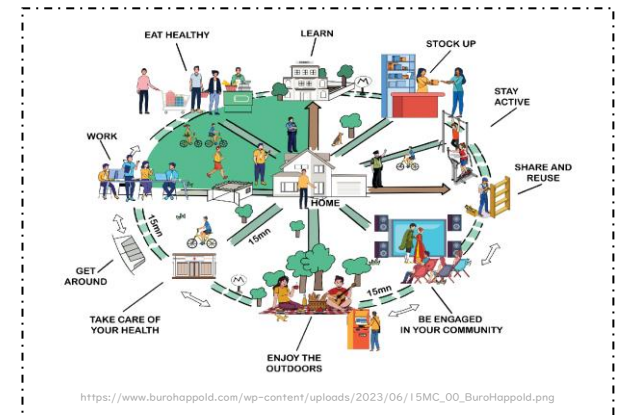
: 98 sec.

### Time for 120 wpm

: 81 sec.

### Your BEST TIME

: \_\_\_\_\_ sec.



### 【Listen & Fill Blank】

The idea of the "15-Minute City" is \_\_\_\_\_ popular around the world. It's about making cities where residents can \_\_\_\_\_ everything they need, like shops, schools, parks, and even public \_\_\_\_\_, all within a 15-minute walk.

In a 15-minute city, everything is \_\_\_\_\_ located nearby. People can walk or bike to work, school, or the park without spending a lot of time in \_\_\_\_\_. This makes the air \_\_\_\_\_ and the streets safer. There are also more places for people to play, shop, and meet their \_\_\_\_\_. By minimizing car use, the 15-minute city helps the \_\_\_\_\_ because it cuts down on pollution and helps fight \_\_\_\_\_ change. It also brings people together because they are more likely to spend time in their local \_\_\_\_\_. Cities like Paris and \_\_\_\_\_ are already working on 15-minute city \_\_\_\_\_, and many others are thinking about it too. Experts suggest this approach can significantly improve \_\_\_\_\_ of life for everyone.

### 【Q&A / A&Q】

**Question 1:** What is the “15-minute city” about?

**Question 2:** How does the “15-minute city” help fight climate change?

**Question 3:** Which cities are already working on 15-minute city principles?

**Ask 1:** 店、学校、公園、そして公共交通機関 "という答えがある質問をする。

**Ask 2:** local community」 という答えを含む質問をする。

**Ask 3:** 15 分の街」 について何でも質問してください。

**Sample Answer 1:** It's about making cities where residents can access everything they need, like shops, schools, parks, and even public transport, all within a 15-minute walk.

**Sample Answer 2:** By minimizing car use, the 15-minute city helps the environment because it cuts down on pollution and helps fight climate change.

**Sample Answer 3:** Paris and Melbourne.

**Sample Question 1:** What can the residents access within 15 minutes?

**Sample Question 2:** Why does this idea bring people together?

**Sample Question 3:** Can I also go to hospital in 15 minute?